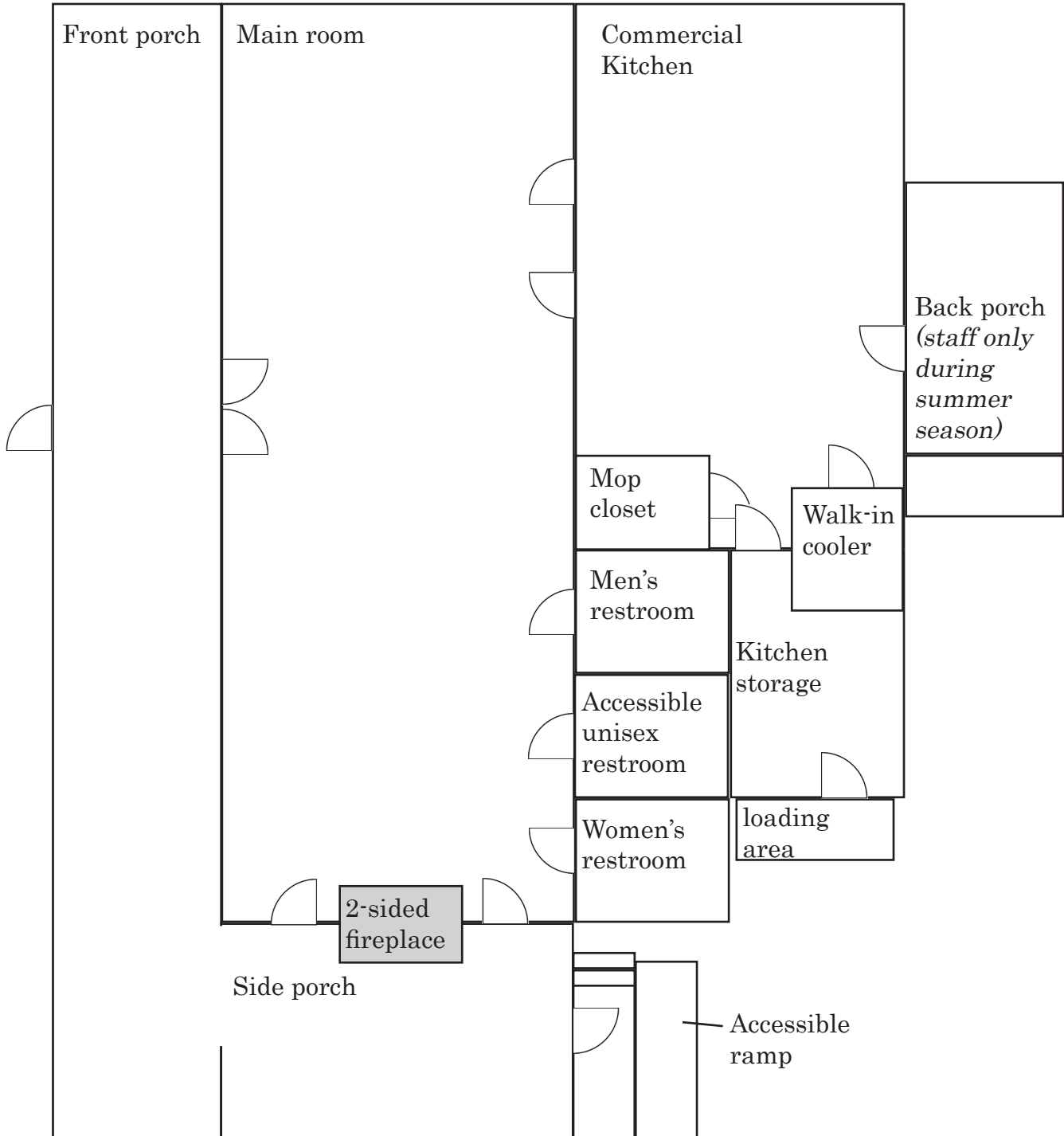
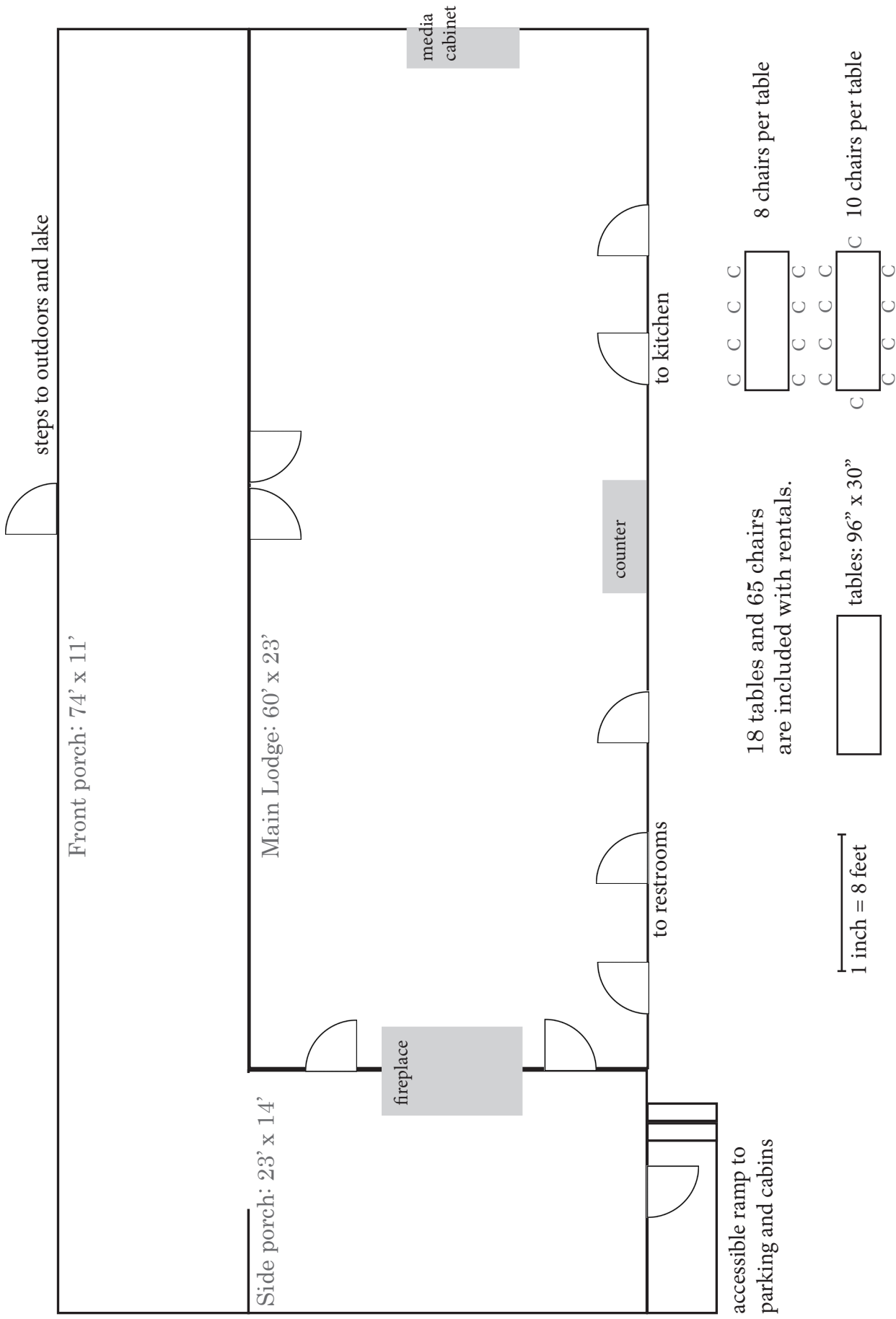


# Lodge floorplan



# Event planning diagram



Front porch: 74' x 11'

steps to outdoors and lake

Side porch: 23' x 14'

Main Lodge: 60' x 23'

fireplace

counter

media cabinet

to restrooms

to kitchen

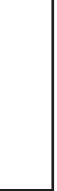
accessible ramp to parking and cabins

18 tables and 65 chairs are included with rentals.



8 chairs per table

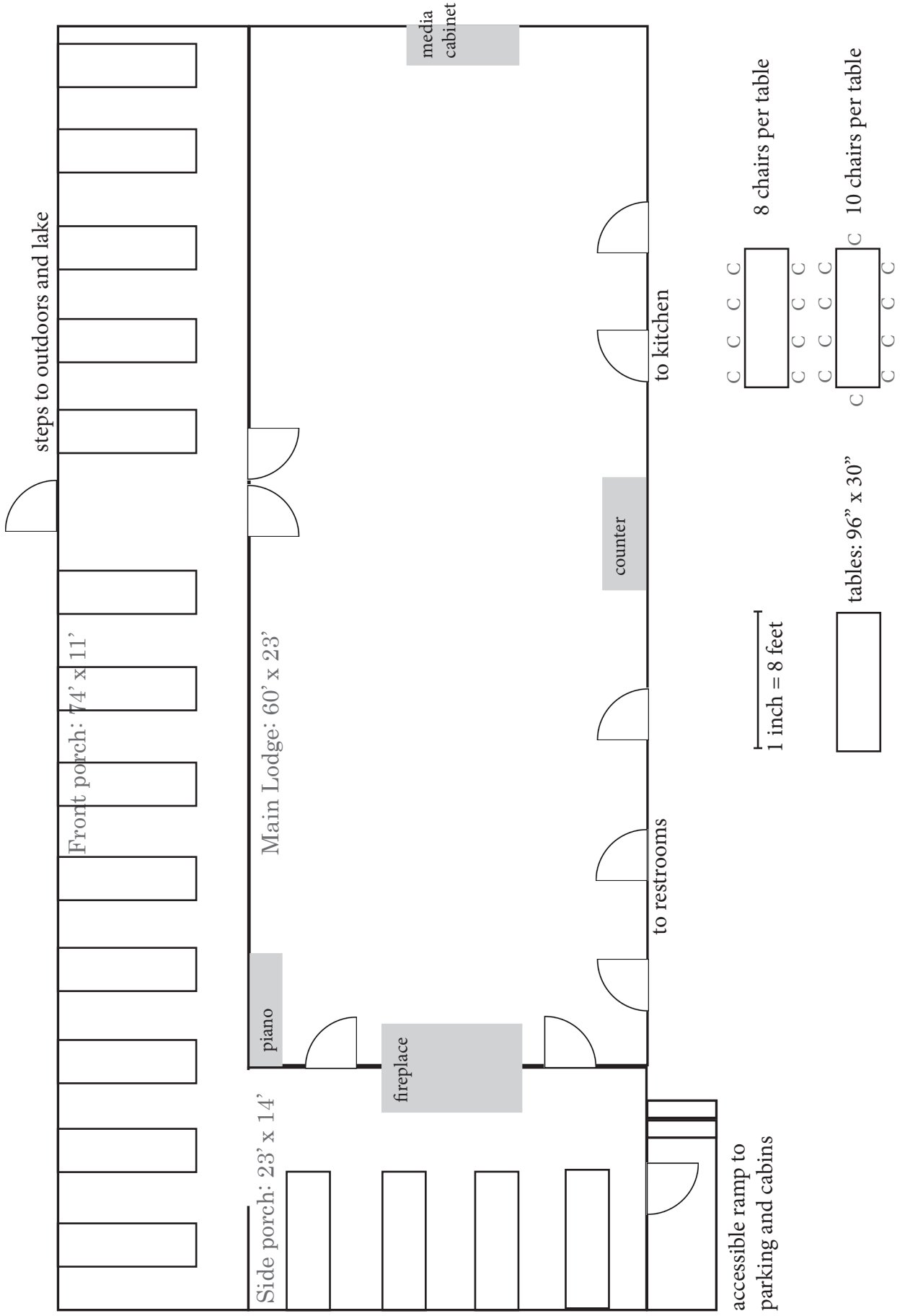
1 inch = 8 feet



10 chairs per table



# Porch seating (seats 136)



# Lodge seating with buffet (seats 160)

